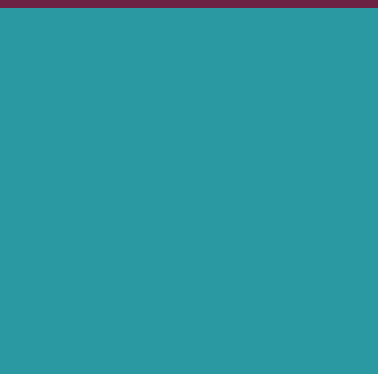
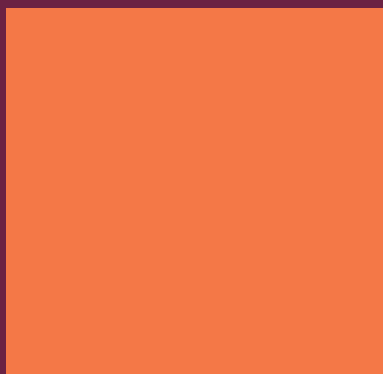




# Oxley Park Academy & Nursery Village

Prospectus 2022



**DREAM - BELIEVE - ACHIEVE - Together**

# Welcome to our school!

Oxley Park Academy is a special place, and provides a wonderful environment for children to learn. I lead the vision and strategic direction for the academy across both sites - the Oxley Park campus and the Shenley Wood campus. The academic year 2017-2018 witnessed an exciting new chapter for our academy, with a second campus to cater for our growth, a major investment across both sites, a complete re-decoration of our original site which opened in 2005 and lots of new faces joining the team. As a team, we have created a safe, inspirational and exciting learning experience for every child, built around our values - The 6C's: Courageous, Courteous, Cooperative, Conscientious, Caring and Curious. These form the core of everything we do and we refer to them every day.



**Mr Springett-McHugh**

Executive Principal

Our children are proud to be 'Oxley Parkers' and they wear their uniforms with pride. We talk about being ready to learn, and our attitudes, our presentation and our urgency to learn all represent this. You will witness this in every room you enter and through every corridor you walk. Our children are wonderful - so polite, so smart and so positive in their learning.

Core learning is the foundation to our curriculum and we place a high emphasis on this. Being confident in reading, writing and maths opens so many doors and gives your child access to the wider opportunities in learning. No matter what ability your child is working at, we ensure they have the right resources, the right level of challenge and the right support in order to develop an absolute love of learning.

Being inspired, excited and having a real sense of curiosity, we believe, is also key to children loving school and wanting to learn new things. It is for these reasons that you will enter a very different 'style of school' when you enter Oxley Park Academy! At our Oxley Park campus, you will walk down streets instead of corridors. In these streets, you will see children learning independently and loving the space around them. At our Shenley Wood campus, airy glass and open quads await, along with looking out to green fields and trees in the distance.

Our curriculum is exciting and engaging. Each term, we open a new 'Doorway' for all the children. Within this doorway, each year group takes a different, exciting pathway leading them through history or maybe a geographical exploration. Whatever the pathway, it will also promote both our academy and British values. The doorway theme always starts with a 'Dazzling Debut' and ends with a 'FAB Finale', all created to inspire and engage our children.

Our parents are very supportive, keen to help their children at home and ensure that the children are ready to learn at school. Here at Oxley, we see this partnership as vital in ensuring that every child can be the very best that they can be.


I hope you enjoy reading through our prospectus which gives you a brief overview for starting your journey at Oxley Park Academy. For a wider insight to life at Oxley Park, do visit our website or make an appointment to come and see us for yourself! I look forward to welcoming you.

# Our Vision, Values, Habits and Promise



**Dream**  
Little people dream BIG!

This is the start of your Oxley Park learning journey. In Nursery and Foundation you can have the wildest of dreams and act these through play and being creative in ways you may never have before. Role play, art, construction, outdoor play and exciting spaces to explore. Dream of being a fire fighter, a police officer, a doctor, a nurse or a pop star. Dream of being a chef, a writer, an artist, a scientist, a teacher; whatever your dreams, they start here at Oxley Park.



**Believe**  
I can and I will!

Entering Year 1 and 2 is where you start to believe that dreams do come true! Opportunities to gain rewards, take part in clubs, try out new things all become a reality. Learning new skills, starting to write stories, using your imagination, solving problems, learning to read, learn your times tables and believing you can do something! This is where you start believing in yourself and challenging your dreams on your Oxley Park learning journey.



Your potential is endless...  
**Achieve**  
How far will you go?

The stage of your journey through Oxley Park where Dreaming and Believing leads to Achieving! You are developing your skills, your dreams have started to come true, your belief in yourself and knowing you can do something has grown tremendously and you have started to feel success in your achievements. Achieving through becoming an Oxley Park Ambassador, Head Boy or Girl, scoring a goal, dancing in Strictly, entering a writing competition or taking the lead in a performance. Swimming a length, abseiling, knowing all your times tables and becoming a master in maths. You are growing up and as you come to the end of this journey you and your friends have Dreamed, Believed and Achieved together! Once an 'Oxley Parker' always an 'Oxley Parker'!

## Our Vision

Dream, Believe, Achieve - together, is what we want to 'see'. This is the language we use to explain to our children' When we walk into each area we can see the vision everywhere we look.

## Our Values

Our 6C Values are what we 'hold' inside us. This is the language we use to explain to our children. Please see the Values page on our website. Holding these values make sure our vision can be seen.

## Our Habits

Our FAB 5 Habits are our 'actions' we do without thinking. This is the language we use to explain to our children. They become good habits. Having these good habits ensure we hold our Values inside us. This, in turn, makes sure our vision can be

## Our Promise

Brings together our vision, values, and habits and shows how they all link together to make our school such a happy place. Our children helped to write our promise and sign it every year.

## The Oxley Park Promise

As an Oxley Parker, I promise to be fussy and bothered about everything I do. I will always help others and will be kind and polite to everyone I meet. I will greet people with a smile and follow the FAB Habits every day. At Oxley Park Academy, we dream, believe and achieve together, and I will work with others as part of a team, following the 6C values and giving everyone a chance to shine. I am brave in my learning and any challenge I may face, and I am determined to succeed.

This is who I am. This is me.





**The Nursery Village  
at Oxley Park Academy**

## Our Nursery Village

Our Nursery Village is home to up to 39 children from the age of 3. The Village is based at our Shenley Wood campus in a purpose-built section of the main school. Due to such popular demand, we have now extended the Village to provide much more indoor and outdoor space for our little people to dream big!

Our Nursery Village is exactly that, designed around a real village which includes a village green, village hall, village manor house, a range of village shops and houses and a very special village beach! All of which creates a little world for little people!

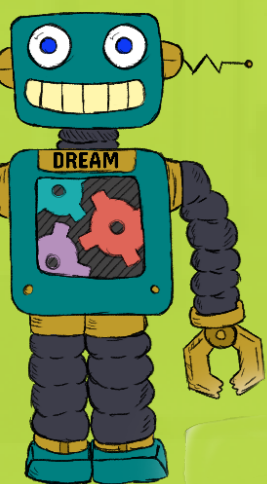
## Our Enriching Curriculum

We have designed our curriculum to be loved and enjoyed by all children. Right from the beginning in our Nursery Village and Reception, we want it to hook the children as they walk through the door for the very first time. At this stage, children learn through an engaging and exciting curriculum that has a balanced approach using continuous provision and adult-led activities. This prepares them well to enter Key Stage 1 when they start their National Curriculum journey.

Reading is at the heart of our curriculum, starting from the first day a child is at school. A rigorous phonics programme embeds a real foundation in making sure every child can access text in all forms. We promote reading as the key to opening all the doors in learning. Books, books and more books are found in every corner of our school along with spaces to relax and enjoy them. Around every corner, you will find a place to 'just love reading'.

Every term we enter a Doorway which takes us into an exciting world of Pathways; history, geography, science are all experienced along with computing, art, DT and music. Developing our mind and understanding of others through PSHE, RE and, of course, our own health and wellbeing through PE are all experienced by every child.

Our curriculum is further enhanced with a wide range of trips, residentials, visitors, interactive technology, productions and celebrations. A truly exciting and engaging experience for all children.



# FAB things to know about starting at Oxley Park Academy

## Admissions

Once you have chosen Oxley Park Academy as your school, your next step will be to contact the School Admissions team at Milton Keynes Council. You can request an in-year transfer form from them, should your child be moving within an academic year.

## The school day and times

Our school opens at 8.30am and ends at 3pm. Children have lunch between 12noon and 1pm. Our Nursery Village sessions run from 8.30am-11.30am for the morning and 12.30pm-3.30pm for the afternoon session.

## Wraparound care

Premier Education runs our before and after school care. These sessions run on both campuses and all children can access them. For further information and bookings please visit our website.



## PE

Children take part in PE lessons during the week with our dedicated team of PE staff. Children come to school in their PE kits on their designated PE days and remain in their PE kits all day.

## Volunteers in school

We welcome volunteers to support us in school. Listening to readers, helping with practical lessons such as art, DT or Forest Schools are all ways in which volunteers can be a real support!

## Punctuality

Arriving to school on time is vital to a child's learning. Gates open in the morning at 8.30am and registration is taken at 8.40am. Any child arriving after this time will need to enter through the main reception on each campus and will be marked as late. Any child arriving after 9am will be marked as unauthorised late and an accumulation of late marks could result in a Fixed Penalty Notice being issued.

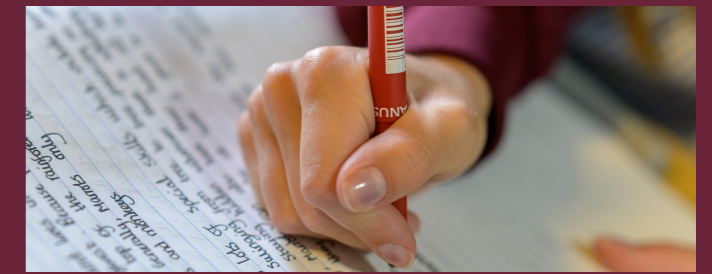
## Leave of absence

Requests for leave must be given using the Request for Leave of Absence form, addressed for the attention of the Associate Principal. Leave of absence can only be granted in exceptional circumstances. Holidays in term time are not authorised and any unauthorised absences may lead to the Local Authority issuing Fixed Penalty Notices.



## Key policies

There are a wide range of key policies that we follow and may be of interest to you. You can find these on our website.



## Uniform

We are proud of our Uniform and thank you in advance for upholding our standards.

### Nursery Village Uniform

Logo Teal polo shirt  
Plain Black jogging bottoms  
Burgundy Village sweatshirt or cardigan

### Main School Uniform

Grey trousers, shorts, skirts or pinafore.  
Blue gingham dresses in warmer weather  
Blue polo shirt  
Burgandy school sweatshirt or cardigan  
Black school shoes

### Year 6 Uniform

School blazer  
Blue shirt  
School tie  
Grey trousers or skirts  
Plain grey v-neck jumper or cardigan

Jewellery, except watches and stud earrings, are not to be worn in school.

Indoor PE: House T-shirt and black shorts. Outdoor PE: House T-Shirt with a plain black sweater or hoody and black jogging bottoms. No stripes or logos or ¾ length pedal pusher style leggings. Dark coloured plain trainers must be worn outside.

If you require further information regarding our embroidered school uniform then please visit Maisies <https://www.maisies-superstore.co.uk> or call them on 01908 313313908 313313



## School meals within our Bistro

Our Bistros form an integral part of our school day. Fresh, healthy and nutritious meals are prepared by our dedicated team of kitchen staff. Children can relax at lunchtime, whilst eating and chatting with friends.

Children in Years Reception – Year 2 do not pay for a school meal under the Universal Infant Free School Meal scheme, however meals do still need to be ordered in advance.

If you believe you are eligible for certain tax benefits, this may entitle your child to a Free School Meal, regardless of your child's Key Stage, and we would strongly encourage you to register for a Free School Meal using this link:  
<https://www.cloudforedu.org.uk/ofsm/sims>.  
 It is a quick, and confidential service.

If your child is eligible, we will be notified via the portal and all you will need to do is ensure your meal is pre-ordered. Your child can receive a Free School Meal and also vital Pupil Premium Funding.

## Permissions

We require consent and permissions for your child bring a mobile phone to school, access the internet and have their photos taken and displayed. Consent forms can be obtained via our Academy Admin Centre or downloaded from our website under the Admin Centre tab. This is also applicable for your child to appear on our social media pages.

## Mobile phones

Children in Years 5 and 6 are allowed to bring a mobile phone to school providing they have signed the disclaimer that is available to download from our website.

## After school clubs

We run an extended provision of after school clubs for our children to enjoy, such as football, multi sports, arts and crafts and film clubs. These are advertised in advance and booked on a first come, first served basis via the School Gateway app.



## Administering medicine

Medicines can be administered in school if a medicine indemnity form has been completed by a parent or guardian. Forms can be obtained via the Academy Admin Centre or downloaded from our school website, under the Admin Centre tab.

## Contacting parents

We contact parents via phone, email or text message so it is vital that we hold the most up to date contact details for you. We also keep parents up to date with all things Oxley via our website and our social media pages on Facebook, Twitter and Instagram.

## Sickness

If your child is too poorly to come to school, parents must telephone the Academy Admin Centre by 8:40am to advise of the reason for their child's absence. If your child has a tummy bug, sickness and/or diarrhoea, they must remain off school for 48 hours after the last bout.

## Reporting absence

Children's absences must be reported by 8.30am daily on our absence lines Oxley campus - 01908 503870 or our Shenley Wood campus on 01908 506899. You must call in for each day that your child is going to be absent from school. If we do not hear from you, you will be called and receive a text to ascertain a reason for your child's absence.

## Home Learning

Reading is our absolute priority for our home learning. Reading ,sharing and enjoying a book together from Nursery to Year 6 is vital. As your child progresses through our school the amount of home learning increases.





## **Oxley Park Academy & Nursery Village**

### **Contact information**

The Academy Admin Centre has a base on both our campuses with a Welcome Desk that is staffed between 8.30am and 4pm every day during term time. We are here to assist in any way we can and if necessary direct you to the right person within our academy. Please never hesitate to ask questions, we are here to get these answered and if we can't answer it, we will find the person who can!

**Oxley Park Campus Admin Centre: 01908 503870**

**Shenley Wood Campus Admin Centre: 01908 506899**

**Email: [office@oxleyparkacademy.com](mailto:office@oxleyparkacademy.com)**

